

PCS3000 3-Litre Calibration Syringe Connection Details

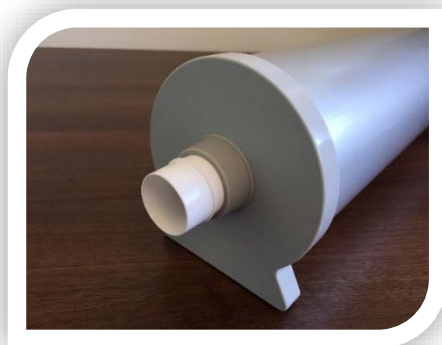
The PCS 3000 calibration syringe is used to verify the calibration of Spirometry devices in association with spirometer manufacturer's instructions.

Before use – it may be necessary to remove the dust protection bung from the outlet of the syringe. Carefully pull the plastic bung to remove



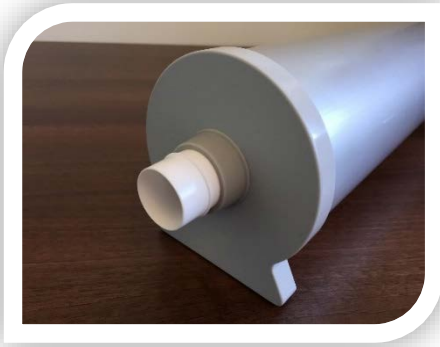
MedChip SpiroConnect

Carefully but firmly insert the white plastic adapter in to the syringe outlet. Then attach the SpiroConnect upside down to the white plastic adapter.



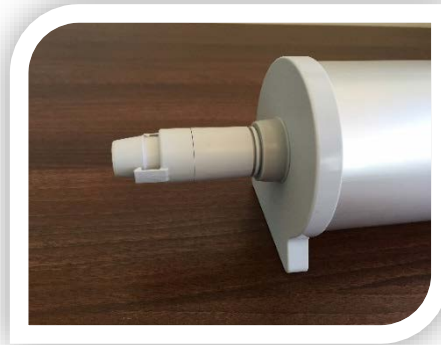
Carefusion Spirometers

Carefully but firmly insert the white plastic adapter in to the syringe outlet. Then attach the spirometer turbine assembly to the white plastic adapter.

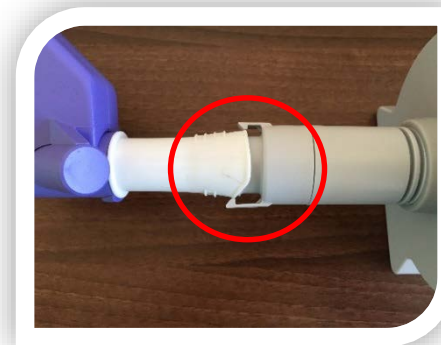


NDD Trueflow Easy On-PC

This device requires a special adapter to fit the mouthpieces. Carefully but firmly push the ribbed end of the adapter in to the syringe outlet.



Fit the mouthpiece to the adapter. Note the clips are offset to match the offset pattern on the plastic mouthpiece. Ensure correct alignment for a secure fit.



Supply ▶ Installation ▶ Training ▶ Support

Alliance House, Roman Ridge Road, Sheffield S9 1GB • Tel: 0114 2433896 • Email: sales@numed.co.uk

www.numed.co.uk

P100005 05/10/2015