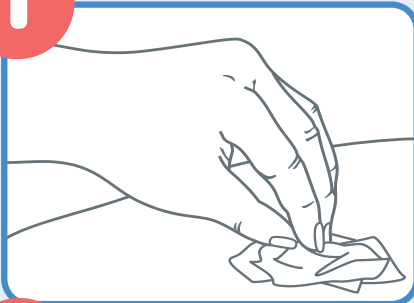


Application of Ambu Blue Sensor ECG Electrodes

1

Clean and dry the skin.



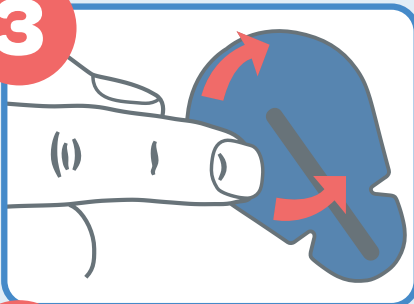
2

Peel electrode from the plastic liner.



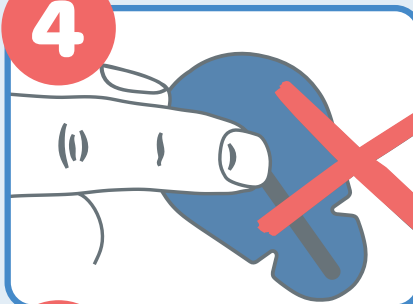
3

Place the electrode on the skin by gently pressing around the adhesive edge with a circular motion.



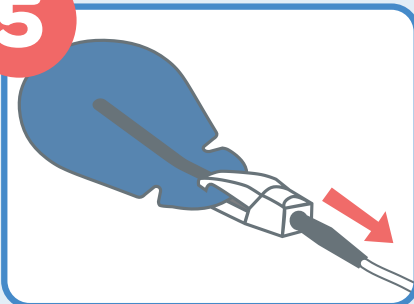
4

When using electrodes with wet gel, avoid pressing down on the center of the electrode.



5

Connect the cable.



6

Electrodes with offset connectors should be positioned facing in the same direction as the cable.

