



I3 Intelligent Integration Software For EMIS LV, PCS & WEB CAM-USB Quick User Guide

1. Ensure the ECG Cable is plugged into a USB port on the PC.
2. Find the correct patient's medical record in EMIS.
3. Double click the **I3 icon** on the desktop. **Note:** This will launch the I3 Software.
4. Click the **Start** button.

5. Select **GE CAM-USB** from the product list and click **Start**.

6. Confirm the patient details are correct then click **Yes**.

7. Cardiosoft will initialise and the ECG monitoring screen should appear (shown right).

8. Check that the electrodes are sufficiently connected to the patient. To check your electrode connection quality use the connectivity guide shown on screen.



Green – Indicates good connectivity with the patient.

Amber – Indicates a lead problem (high impedance).

Red – Indicates that the electrode is disconnected from the patient.

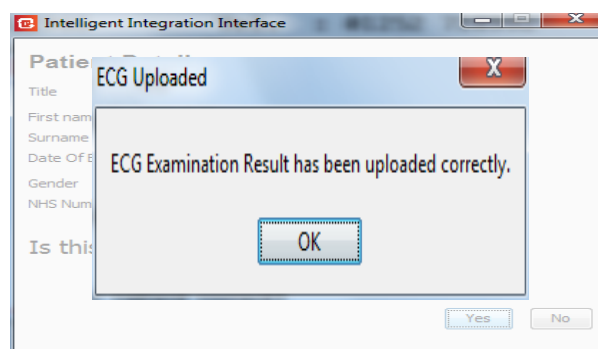
9. When the quality of the ECG is satisfactory, click the **ECG Acquisition** button. There may be a delay of up to 10 seconds whilst the ECG is acquired. '**ECG Analysis**' will appear briefly in the top section of the screen as the acquisition completes.

10. As the Acquisition completes, the **Post Test Review** button will become available – click this to review the Test Summary (Measurements, System Interpretation etc.).

11. To begin the filing process in to EMIS, close the **Test Summary** window by clicking the cross in the top right hand corner.

12. After a few seconds, the **Comments** box will appear, enter any required comments, and then click **OK**. Any comments entered will be filed alongside the ECG attachment in the patient record.

13. Click **OK** on the confirmation message (shown right).



A PDF of the ECG report will now be attached in to the patient's medical record in EMIS. The **3212 Standard ECG** read code will also be filed.

14. To verify the ECG report has been successfully filed in to EMIS follow the instructions detailed over the page.



Supply ► Installation ► Training ► Support

Alliance House, Roman Ridge Road, Sheffield S9 1GB • Tel: 0114 2433896 • Email: sales@numed.co.uk

www.numed.co.uk



I3 Intelligent Integration Software For EMIS LV, PCS & WEB CAM-USB Quick User Guide

Viewing the ECG Report in the patient's medical record:

Note: For the ECG to be displayed the PC must have a PDF viewer installed.

EMIS LV

1. Open the patient's record in EMIS LV
2. Go to Consultation Mode (**CM**)
3. Key in the ***RA** number of the ECG attachment.
4. The ECG report will be displayed as a PDF document. It may take a few seconds for the report to be displayed depending on network speed and usage. Alternatively, from the Medical Record (**MR**) key **Z** for attachments, select the required attachment and key **V** to view.

Note: For the ECG to be displayed, the PC attempting to open the ECG report must have a TEMP folder available on the C drive (C:\TEMP).

EMIS PCS

To view an ECG stored in the patient's notes:

1. Open the patient's record in EMIS PCS
2. Go to Consultation Mode (**CM**) or Medical Record - History
3. Right click on the ECG report and left click View Attachment.
4. The ECG report will be displayed as a PDF document. It may take a few seconds for the report to be displayed depending on network speed and usage.

EMIS WEB

To view an ECG stored in the patient's notes:

1. Open the patient's record in EMIS WEB
2. Go to Consultations
3. Double click on the ECG attachment paperclip.
4. The ECG report will be displayed as a PDF document. It may take a few seconds for the report to be displayed depending on network speed and usage.



Supply ► Installation ► Training ► Support

Alliance House, Roman Ridge Road, Sheffield S9 1GB • Tel: 0114 2433896 • Email: sales@numed.co.uk

www.numed.co.uk